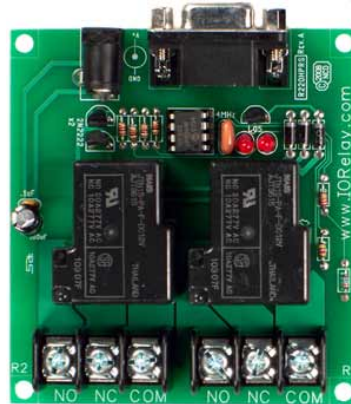


ChildCare Sage Door Strike Manual

(Childcare and Preschool Management System)

Version 14.4



The Childcare Sage Door Strike Manual explains how to install and connect the Childcare Sage TimeClock to an Electric Door Strike so that the TimeClock can automatically open a door once a person has signed in or out.

Because the Childcare Sage TimeClock runs on a standalone computer, it is generally difficult to use the TimeClock on an exterior door. Most centers that use the Childcare Sage with an electric door strike have the door strike installed on an interior door after one enters the building.

Why You Should Use an Electric Door Strike with the Timeclock

If needed, using an electric door strike with the timeclock allows your center to:

1. secure an interior entrance and only allow people to enter who punch in a valid ID code,
2. not have a front door attendant or receptionist to buzz people in, and
3. automatically have people sign in/out when they come in.

This Manual explains how to setup and use an electric door strike with the Childcare Sage Timeclock. We **CANNOT** troubleshoot door strikes or the control board. Our Timeclock simply sends commands to the control board, nothing else.

Installing an electric door strike is **NOT SIMPLE** and usually requires drilling and chiseling the door to mount the strike. Further, installing the control board usually requires a plastic IC circuit box and very basic wiring knowledge.

We **CANNOT** be held responsible for any mishap and damage that is caused when installing the electric door strike or control board.

IF YOU ARE NOT COMFORTABLE installing the strike or control board, please **HIRE A LOCK SMITH or ELECTRICIAN** familiar with Electric door strikes and controllers.

If you can't find the answer to your questions in this Manual, please check the Childcare Sage Forums on our website, or email or call us.

Childcare Sage Door Strike Control Functionality

After trying numerous computer controlled circuits, we recommend and interface with the R220HPRS Serial RS232C Controller Board from ControlAnything.com . Almost any electric door strike will work with the controller board. You can find different electric strikes at commercial lock supply vendors or on ebay (look up electric door strike.)

Parts You Need

The parts needed can all be ordered from ControlAnything.com and are listed below:

- 1) R220HPRS Serial Controller Board (about \$45-\$50)
- 2) PWR12 power supply (about \$25)
- 3) Serial Cable (6ft) (about \$6)

4) If your computer does not have a serial port, you will also need the BF-810 USB to Serial Adapter (about \$25)

Software drivers for the BF-810 Adapter can be downloaded from:
http://www.bafo.com/download/Driver/PC/BF-810%20DriverInstaller_v1210_Windows.rar

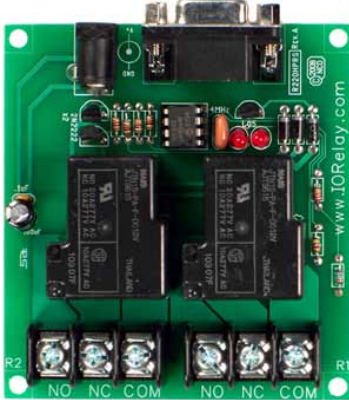
Serial Port
(RS232C)



Please note that not all USB to Serial Adapters work with the controller board; which is why we only recommend the BF-810 adapter above.

Pictures of the needed items are below:

R220HPRS Serial Controller Board



PWR12



Serial Cable



USB to Serial Adapter



Electric Strike



Software You Need

The Childcare Sage TimeClock has the doorstrike functionality built into it. The only other software you must install is the Bafo USB to Serial driver if you will be using the adapter.

Installing the Electric Door Strike and Controller Board

- ** DO NOT USE THE SAME POWER SUPPLY FOR THE DOOR STRIKE AND THE R220HPRS CONTROLLER.**
- ** THE POWER SUPPLY SHOULD NOT BE SHARED BETWEEN THE DOOR STRIKE AND CONTROLLER BOARD.**
- ** YOU CAN ONLY USE THE PWR12 POWER SUPPLY TO POWER THE R220HPRS CONTROLLER BOARD.**

Because installations vary, we cannot offer advice on how to install the electric door strike or controller board other than basic instructions covering which wires to connect. If you are uncomfortable installing the strike or controller board, please hire an electrician or lock smith.

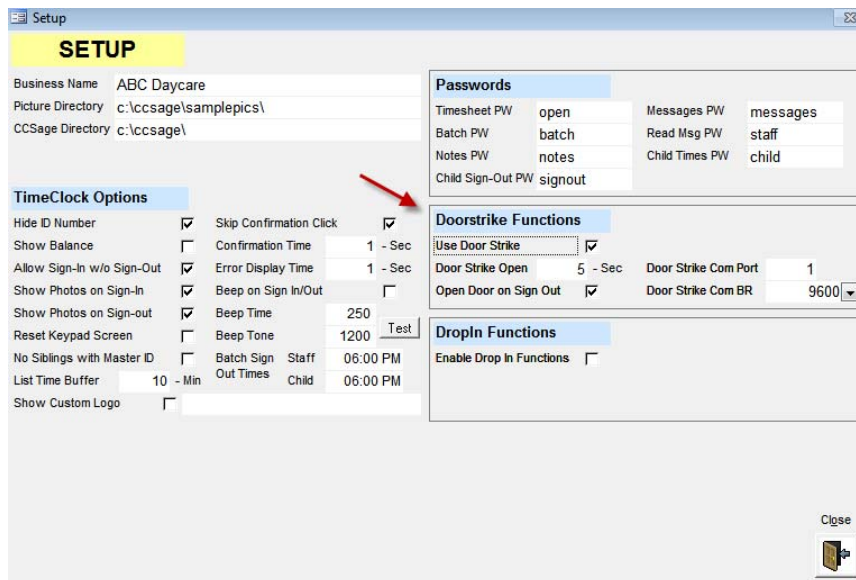
Once the electric door strike is installed, connect the power wires from the door strike and door strike power supply as follows:

- 1) run the + power wire from the door strike to the n.o. (normally open) connection of Relay 1 on the controller board,
- 2) run the + power wire from the door strike power supply to the common connection of Relay 1 on the controller board,
- 3) attach the – from the door strike power supply directly to the – wire from the door strike.

Next, run the serial cable from the controller board to the COM (RS232c) port on your computer, (if you are using the USB to Serial Adapter, plug the cable into the adapter,) and plug the power supply for the controller board in. (The Childcare Sage Timeclock lets you select which Com port the software will use. Everything else is automatically set up.) If you are using the USB to Serial adapter, the default COM Port is 3. If you are using a serial port on your computer, the default COM Port is 1.

Once everything is connected, open the Childcare Sage Timeclock, and do the following:

- 1) click the Childcare Sage Logo at the bottom left
- 2) enter: open
- 3) next click Setup at the bottom to go into the Timeclock setup
- 4) check Use Door Strike
- 5) change any of the door strike settings



You are finished.

The simplest way to test the door strike functionality is to enter an id on the timeclock keypad and click Open Door.

Please email or call us with any questions.